



LOSIÈ

ENGINEERING - PROCUREMENT - CONSTRUCTION - MAINTENANCE
TEL: 677-50-85-39, POBOX 521 Limbe, Cameroon
Mail: contact@losie-automation.com / web: www.losie-automation.com

AUTOMATIC SYSTEM HOME AUTOMATION

BIOMETRIC FINGERPRINT LOCK

**ACCESS CONTROL SYSTEM (WIRED AND
WIRELESS)**

HOME INTRUDER ALARM SYSTEM

AUTOMATIC SYSTEM HOME AUTOMATION

BIOMETRIC FINGERPRINT DOOR LOCK

Placed your fingers and the bolt will open automatically giving access to the door.

Close the door and in few seconds the bolt will automatically shut (time depending on the equipment and/or the client demand's). In complement with your handle and/or in replacement, the bolt is easily installed, no matter the type of door (wooden, metal, aluminium). Totally autonomous no passage of cable is necessary.

One of the advantages of bolt and biometric lock is to be able to avoid security problem for example loss of keys. With a biometric lock system, it becomes possible for one to do without manipulate and handle the keys. End to lose keys, the lost keys, see also lend keys. End also to double keys for each lock.

**Responsable
commerciale :**

+237 677 50 85 39

**Responsable
technique :**

+237 677 50 85 39

**contact@losie-
automation.com**

Service après-vente :

+237 677 50 85 39

EVOLUTIONARY ACCESS CONTROL SYSTEM

The access control consists of verifying if an entity (a person, a group, etc.) Asking to attain to a "resource" has the necessary right to do it.

We bring together as well as our competences were many people enter and leave, like for example in hotels, hospitals/clinics or in big administrative buildings but likewise with private individuals as well as groups, modern buildings and residence.

Therefore, a secure, reliable closing and access control system with big adaptability on the particular requirement of installation is necessary.

The mechanical systems attain so, in spite of all the qualities, their limits.

Thanks to biometrics closing technics and innovation always secure that covers maximum needs of our client. We will supply the access control system and the close-down which will yield you less dependent on lose keys, and will permit you to adjust your installation with authorization to often modify closing, during the extension and restructuring.

In other words, these system supply new application to you, which is difficult to realize with traditional keys like, in particular, the possibility of coupling with video monitoring, to manage alarm, the events, the entrance, the way out and the status; a genuine asset from term of remote inspection.

HOME INTRUDER ALARM SYSTEM

The intruder alarms primary function to deter potential burglars to do their misdeeds. An intruder alarm system consists of:

- The detection: motion detectors / magnetic switches
- Information processing and transmission: control panel
- The alert: siren / S.M.S to prerecorded numbers
- The command: coded keypad / remote control

There are two major families of burglar alarm that we put at your service:

- The radio alarm (wireless): all the detection and control equipment communicates by radio waves with the control panel. This solution avoids the constraints of cable ducts, which is convenient in an old building
 - The wired alarms: all the detection and control equipment is connected by cables to the alarm center. The advantages of wired alarms are to be more reliable (no interference problems) and allow greater use of distance.
- However, some alarms use both technologies.

COST OF SERVICE

BIOMETRIC FINGERPRINT LOCK: from 200.000 F CFA

ACCESS CONTROL SYSTEM N/C

HOME INTRUDER ALARM SYSTEM: from 500.000 F CFA

CONSTITUTION OF THE TENDER

ASSISTED



ACCOMPAGNIED



AUTONOMOUS



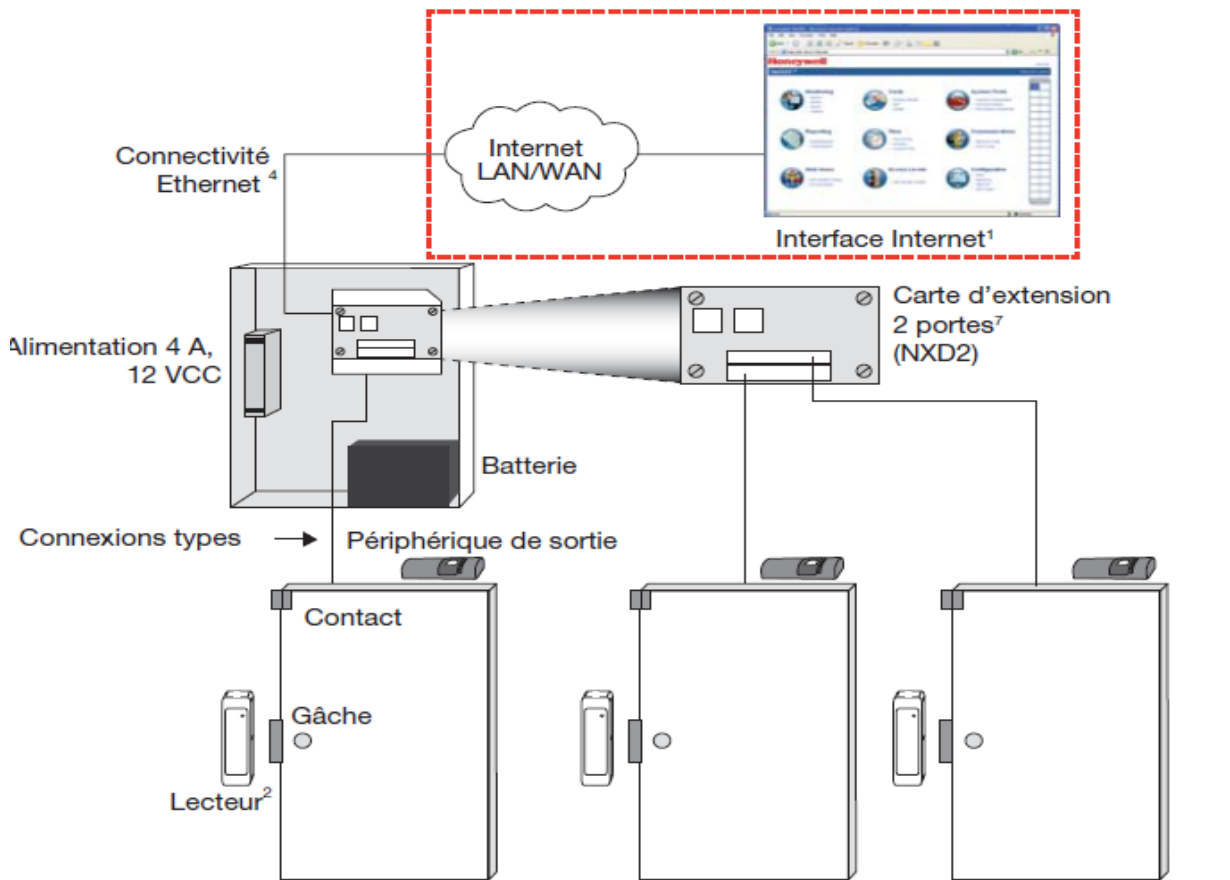
N.B :

- The estimate and invoice that we will bring to you will depend on the type of supply, your installations and the date limit to deliver each supply.
- The replacement of faulty equipment still under guaranteed will be entirely discharge of to you.
- Guarantee 1 year from the last date of labour.

ANNEXE 1: BIOMETRIC FINGERPRINT LOCK

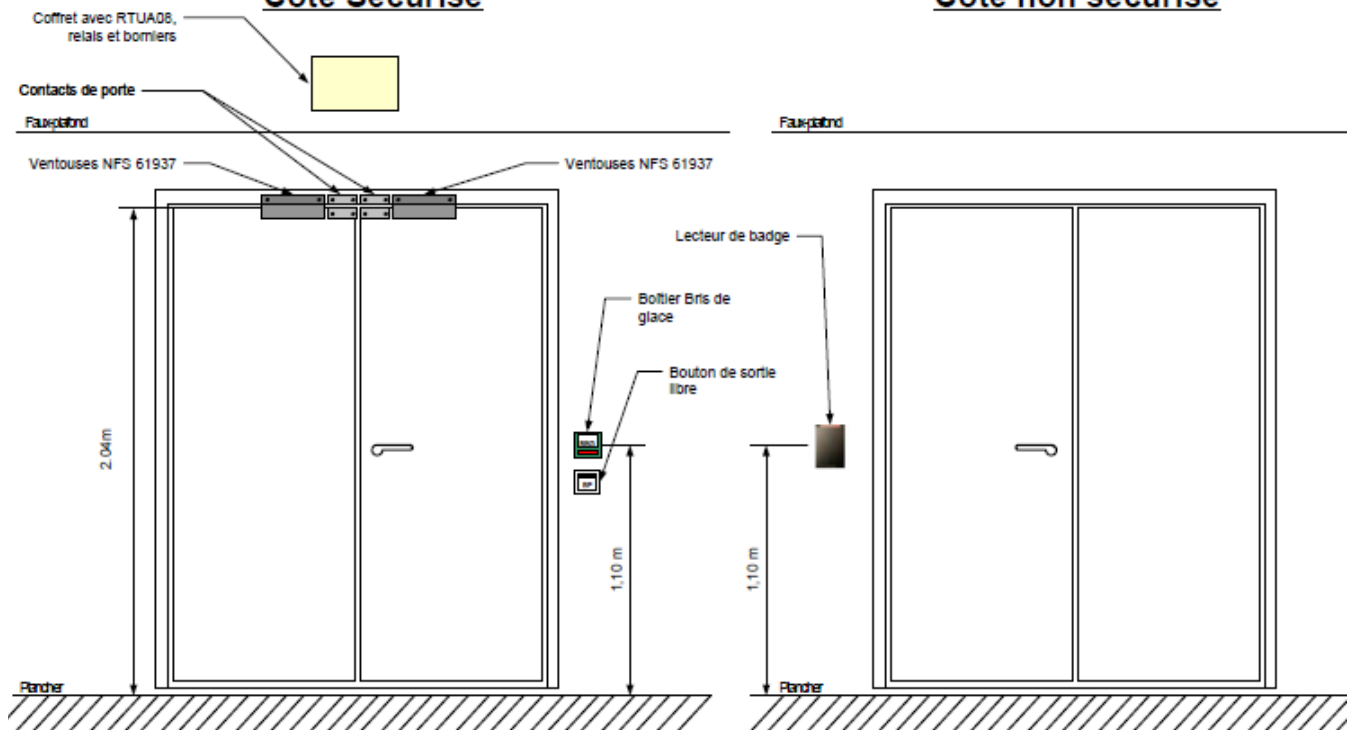


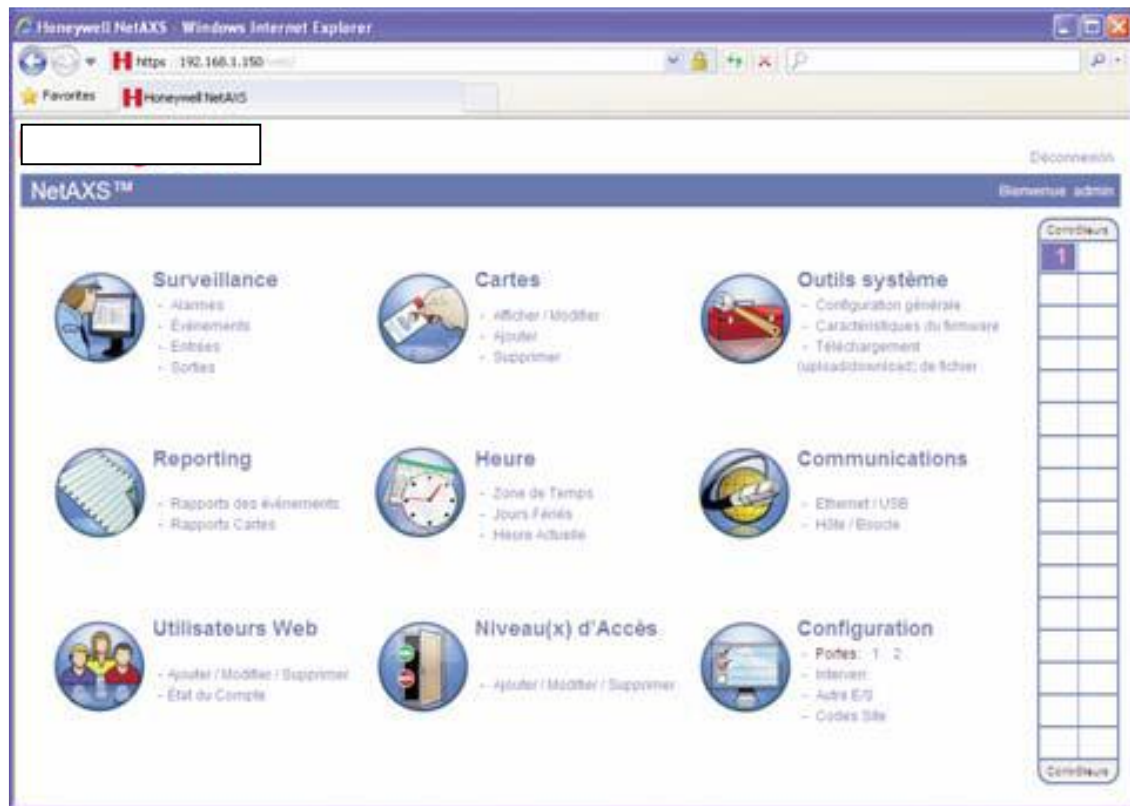
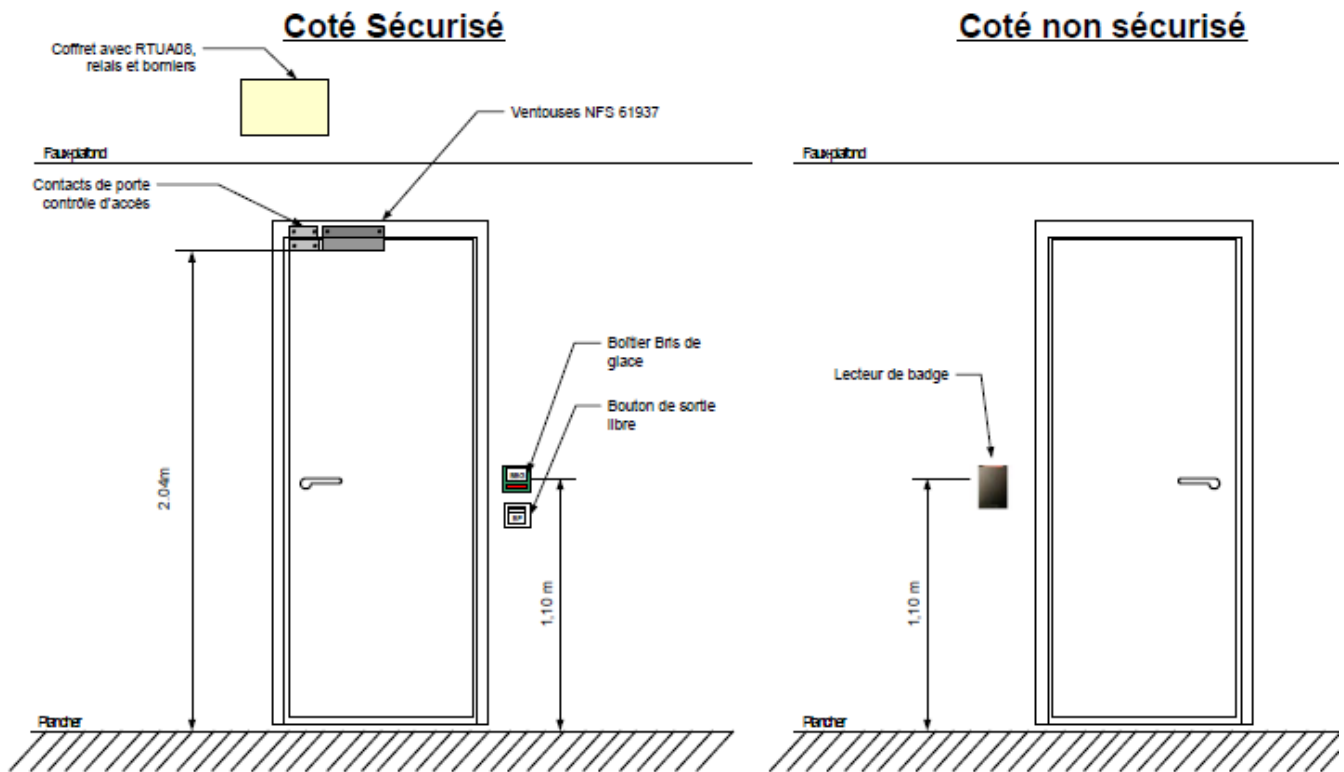
ANNEXE 2: ACCESS CONTROL SYSTEM (WIRED)



Coté Sécurisé

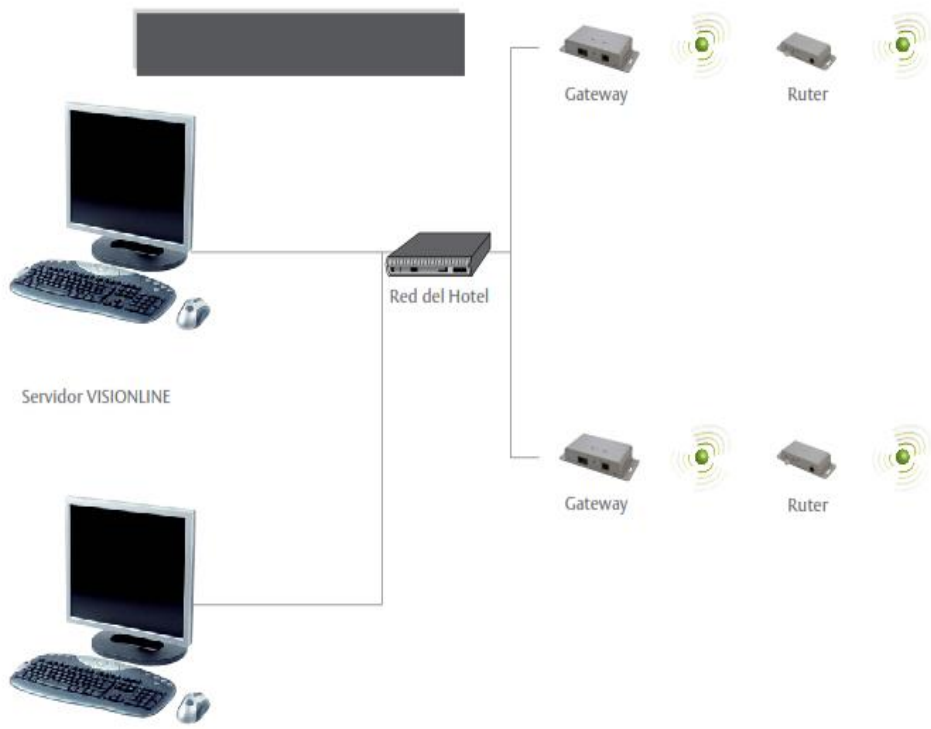
Coté non sécurisé





ANNEXE 3: ACCESS CONTROL SYSTEM (WIRELESS/ Zigbee)





ANNEXE 4: HOME INTRUDER ALARM SYSTEM

